

| | |
|-------------------------|-----------------------------|
| Engine | Cummins 6LTAA8.9 |
| Gross Power | 179 kW (241 hp) @ 2,200 rpm |
| Net Power | 162 kW (217 hp) @ 2,200 rpm |
| Operating Weight | 19,500 kg |
| Standard Bucket Size | 3.5 m ³ |
| Standard Breakout Force | 195 kN |
| Standard Dump Clearance | 3,100 mm |

862H

WHEEL LOADER



TOUGH WORLD. TOUGH EQUIPMENT.

862H SPECIFICATIONS >>>

ENGINE

| | |
|---------------------|--|
| Emission Regulation | Tier 2 / Stage II |
| Make | Cummins |
| Model | 6LTAA8.9 |
| Gross Power | 179 kW (241 hp) @ 2,200 rpm |
| Net Power | 162 kW (217 hp) @ 2,200 rpm |
| Peak Torque | 1180 N·m |
| Displacement | 8.9 L |
| Number of Cylinder | 6 |
| Aspiration | Turbocharged & Air-to-air inter-cooled |

TRANSMISSION

| | |
|---------------------------|------------------------------|
| Transmission Type | Countershaft, power shift |
| Torque Converter | Single stage, three elements |
| Maximum Travel Speed, fwd | 37 km/h |
| Maximum Travel Speed, rev | 26 /h |
| Number of Speed, fwd | 4 |
| Number of Speed, Rev | 3 |

AXLES

| | |
|-------------------------|--------------|
| Differential Front Type | Conventional |
| Differential Rear Type | Conventional |
| Axle Oscillation | ±12° |

STEERING

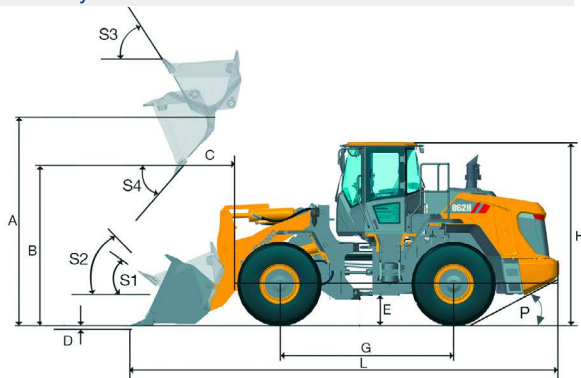
| | |
|--------------------------|-------------|
| Steering Configuration | Articulated |
| Steering Relief Pressure | 19 MPa |

BRAKES

| | |
|-------------------------|--------------------|
| Service Brake Type | Wet discs brake |
| Service Brake Actuation | Hydraulic |
| Parking Brake Type | Manual air control |
| Parking Brake Actuation | Menchanical |

HYDRAULIC SYSTEM

| | |
|--------------------------|----------|
| Main Pump Type | Gear |
| Main Relief Pressure | 20.7 MPa |
| Raise | 5.7 s |
| Dump Time | 1.3 s |
| Float Down Time | 3 s |
| Fastest Total Cycle Time | 10 s |



LOADER ARM PERFORMANCE with Standard Bucket 3.5 m³

| | |
|--|-----------|
| Tipping Load - Straight (ISO 14397-1:2007) | 16,600 kg |
| Tipping Load - Full Turn (ISO 14397-1:2007) | 14,100 kg |
| Bucket Breakout Force | 195 kN |
| A Maximum Hinge Pin Height | 4,212 mm |
| B Dump Clearance at Full Height Discharge | 3,100 mm |
| C Dump Reach at Full Height Discharge | 1,195 mm |
| D Maximum Digging Depth, Bucket Level | 80 mm |
| S ₁ Rollback at Ground Level | 43° |
| S ₂ Bucket Rollback at Carry | 48° |
| S ₃ Bucket Rollback at Maximum Height | 63° |
| S ₄ Maximum Dump Angle at Full Height | 45° |

BUCKET PERFORMANCE

| | |
|------------------|------------|
| Reference Bucket | 3.0-6.5 m³ |
|------------------|------------|

DIMENSIONS

| | |
|--|----------|
| E Ground Clearance | 431 mm |
| G Wheelbase | 3,450 mm |
| H Cab Height | 3,467 mm |
| J Wheel Tread | 2,280 mm |
| K Width Over Tires | 2,880 mm |
| L Length with Bucket Down | 8,628 mm |
| M Turn Angle, Either Side | 38° |
| P Rear Angle of Departure | 27° |
| R ₁ Turning Radius, Bucket Carry | 7,114 mm |
| R ₂ Turning Radius, Outside of Tire | 6,450 mm |
| W Width Over Bucket | 3,046 mm |

TIRES

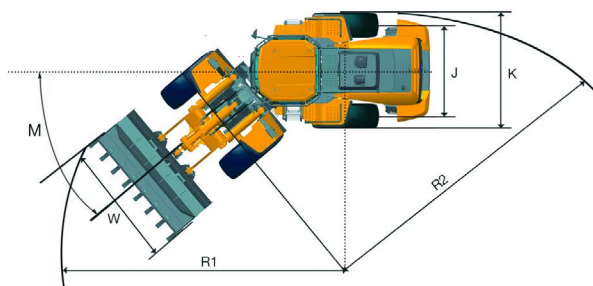
| | |
|-----------|-----------|
| Tire Size | 23.5 - 25 |
|-----------|-----------|

OPERATING WEIGHTS

| | |
|------------------|-----------|
| Operating Weight | 19,500 kg |
|------------------|-----------|

SERVICE CAPACITY

| | |
|-----------------------------------|-------|
| Fuel Tank | 330 L |
| Engine Oil | 22 L |
| Cooling System | 52 L |
| Hydraulic System | 280 L |
| Transmission and Torque Converter | 35 L |
| Axles, Each | 41 L |



Guangxi Liugong Machinery Co., Ltd.

No. 1 Liutai Road, Liuzhou, Guangxi 545007, PR China
T: +86 772 3886124 E: overseas@liugong.com
www.liugong.com

Specifications and designs are subject to change without notice. Machines shown may include optional equipment. Liugong standard and optional equipment may vary from region to region. Please consult your Liugong dealer for information specific to your area.

10/2018 Designed by LiuGong